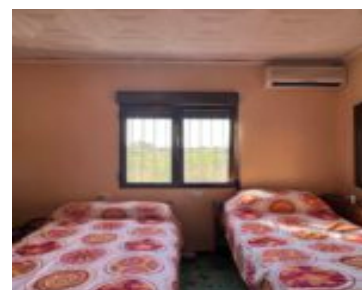


# THE GROUND-LEVEL COUNTRY HOUSE IN SOUTHERN EXPOSURE IS SITUATED ON A PLOT OF APPROX

<https://ambergpons.com>



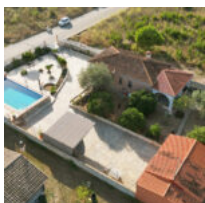
€270,000



- 3 beds
- 1 bath
- Country House
- Resale
- 110 m<sup>2</sup>

The ground-level country house in southern exposure is situated on a plot of approx. 1,180 m<sup>2</sup> and has a built-up living area of approx. 110m<sup>2</sup>, additional approx. 60m<sup>2</sup> are distributed among storerooms and garage. You enter the house through the glazed veranda and come into the cosy living room with fireplace. A kitchen, as well [...]

**The ground-level country house in southern exposure is situated on a plot of approx**



## Basics



### Call us now

Phone: +34 688 883 200

Email: [info@ambergpons.com](mailto:info@ambergpons.com)



**Category:** Resale

**Bedrooms:** 3 beds

**Area:** 110 m<sup>2</sup>

**Type:** Country House

**Bathrooms:** 1 bath

**Lot size:** 1171 m<sup>2</sup>

---

## Reference

**Local\_Reference:** AP-SB-3322



### Call us now

Phone: +34 688 883 200

Email: [info@ambergpons.com](mailto:info@ambergpons.com)

